



OLEG KLODT
ARCHITECTURE
& DESIGN

RESIDENTIAL INTERIORS



Contents

Oleg Klodt	3
Bureau	3
Usovo House	4-14
Barcelona Apartment	15-21
Bykovo House	22-37
Vodniy Stadion - The Aqua Stadium	38-47
Rublevka Family Residential	48-57
Golden Keys Apartment	58-65
The House on Kievskoe Chaussee	66-89
Tverskoy Boulevard	90-99
Pokrovka	100-107
Mosfilmovskaya	108-115
Starovolynskaya	116-125
Savvinskaya	126-135
The House in Pavlovo Village	136-153
Bor'by Square	154-159
The House in The Netherlands	160-165
The House at Dmitrovka	166-171
Nagorniy Boulevard	172-183
Contacts	184



Oleg Klodt

Oleg Klodt was born into an artistic family, which traces its origins back to Pyotr Karlovich Klodt, the sculptor of Imperial St Petersburg. It was unsurprising that Oleg, too, would follow a career connected with art. Oleg Klodt launched his architectural practice shortly after he graduated from the Moscow Architectural Institute.

Oleg Klodt creates classic interiors, characterised by their elegance and chic, and fashioned with innate intelligence.

One of the characteristic traits which manifest themselves in his work is paying attention to the finest level of detail, and creating bespoke pieces of furniture and decor that were individually designed, down to the level of door-knobs and window handles. The delicacy of this approach lends an exclusivity and individuality to each of his interiors.

Anna Agapova

Anna Agapova is a Partner at Oleg Klodt Architecture & Design, and Head of the Design Department. Anna was born into a family of civil engineers - who spent centuries laying railroads and building cities. Her personal journey into the world of architecture began with lighting. She studied urban development at Moscow State University - where she looked at issues of the electrification of cities, with special studies in the field of lighting. In addition to her responsibilities in the top management of the company, her profile also involves the design conception for all ongoing projects.

Bureau

We founded the Oleg Klodt Architectural Bureau in 2000, with the aim of designing interiors to the highest standards — both for private homes, and for businesses and organisations. Our portfolio includes scores of projects we've completed for private apartments and homes — alongside interiors we'd designed for hotels, restaurants, and stores. Our bureau's style may be eclectic — but our understated and consistent approach remains our hallmark.

The creative tandem of Oleg Klodt and Anna Agapova has been catalytic in establishing and developing the bureau's work. While Oleg Klodt works with brevity and clarity in a traditional style, Anna Agapova stays ahead of the trend in the way she completes interiors — bringing a complex eclecticism to the classical format, with new textures and shapes.



USOVO HOUSE, Moscow, Russia

Size: 1000 sq.m

Completion date: spring 2017

Photo credit - Manolo Yllera

Usovo House

Bureau created this project for a young family with a small child. They'd already been our clients before - we did their apartment two years ago. This building is located thirty kilometres away from the city centre. There were two buildings on the ground plot - although only the exterior walls remain from their original design. The entire space has been rethought and replanned. Our brief was to leave the existing structure in place, and use it to create the feeling of a European family home - where the painting collection owned by the clients could be harmoniously displayed. The approach to the space was similar to the Rijksmuseum in Amsterdam - whose walls, in complex shades of grey, make the perfect background for paintings. The final result was an interior in which the bureau succeeded in creating a lyrical space in which classical artworks and antiques, collected from many world journeys, sit perfectly alongside modern furniture, materials and architecture. The designers aimed to make their involvement as unobtrusive as possible - so that whichever room you visit, the main feeling you have is of the personal style and taste of the clients. A unique element in the project is the elegant, though bold-structured staircase, which was tailor-made to individual designs - and which is topped by the world's most spectacular chandelier.

The house is full of guest rooms - which enabled the designers a playful approach to light, and the change to use William Morris wallpaper to create a number of alternative different worlds... which lead us back into the Pre-Raphaelite era. The Master zone, for the owners, is a magnificently engaging space, with its bay window and entrancing textile wallpaper - and leads off into two different bathrooms, male and female. Each reflects a different aspect of the owners' personalities. These are the only rooms in the house where marble is featured.

The clients are regular mountain-skiers, and take inspiration from Alpine architecture - and wanted to recreate something similar in their own home. This is how the guest-house became transformed into a Spa, as the clients requested. There are beams lining the ceilings, aged wooden walls with a smoked-larch hue, and architecturally-exceptional portals poured from liquid concrete. The finishing touch is the tall fireplace with an antique firewood-box.





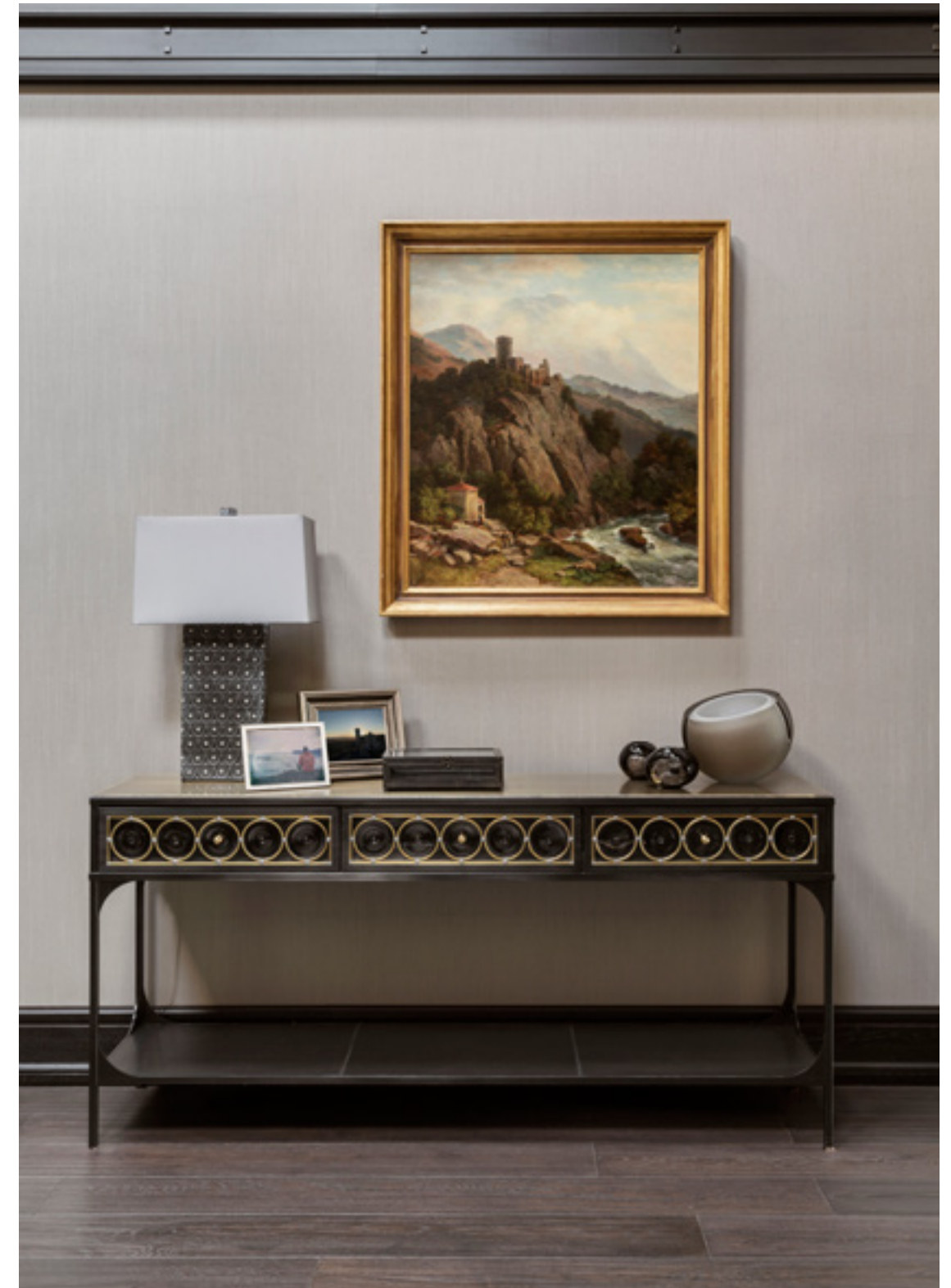


















BARCELONA APARTMENT, Barcelona, Spain

Size: 150 sq.m

Completion date: spring 2016

Photo credit – Manolo Yllera

Spirit of the Time and Cult to Beauty

The historical value of this building almost inevitably dictated the choice of the architectural practice to whom we would entrust its protection and enrichment. Namely, the team of Oleg Klodt and Anna Agapova, who ably envisioned and oversaw its interior design, and with whom the owners of the apartment and the creative team have had a strong and successful partnership over many years.

The space, with its long meandering corridors and ceilings disappearing into lofty heights demanded special treatment, to protect and emphasise the unique details of interior design which, ultimately, define its character and style. The new project of Oleg and Anna is possibly their most touching homage to Barcelona. Its uniqueness is first and foremost about the reverence with which the authors interpret the historic heritage of the ancient Barcino. Oleg and Anna have chosen to observe, respect and draw upon existing elements of decorative workmanship, making these reference points and design landmarks for their modernizing transformations.

It is this mosaic that has become the hero of the Barcelona project: a sculptural minimalism of space, an abundance of light and uplifting, lofty ceilings have become the perfect setting for the gem of the mosaic theme which authors of the project have tried to capture with their inherent sensitivity and subtlety.

Oleg and Anna have made a strategic decision to emphasize the advantages of the interior environment by placing accents in an ingenious way. They have chosen white as a background; neutral walls favorably accentuate active details which visibly dominate the space, simultaneously filling even small areas with air and light.

Speaking of retrieval: the discovery and sensitive extraction of vintage features, often disguised under thick layers of paint by previous owners, utterly fascinates Anna. She decided to restore antique locks, door handles and window hinges by converting them to their pristine state. So, the team patiently unearthed missing parts and other neglected treasures at Barcelona bazaars and flea markets. The result exceeded even the boldest of expectations: the shine has returned to the complex patina of ancient materials and metals and has reinvigorated the confident charm and glamour of the old house.















BYKOVO HOUSE, Moscow, Russia

Size: 600 sq.m

Completion date: autumn 2016

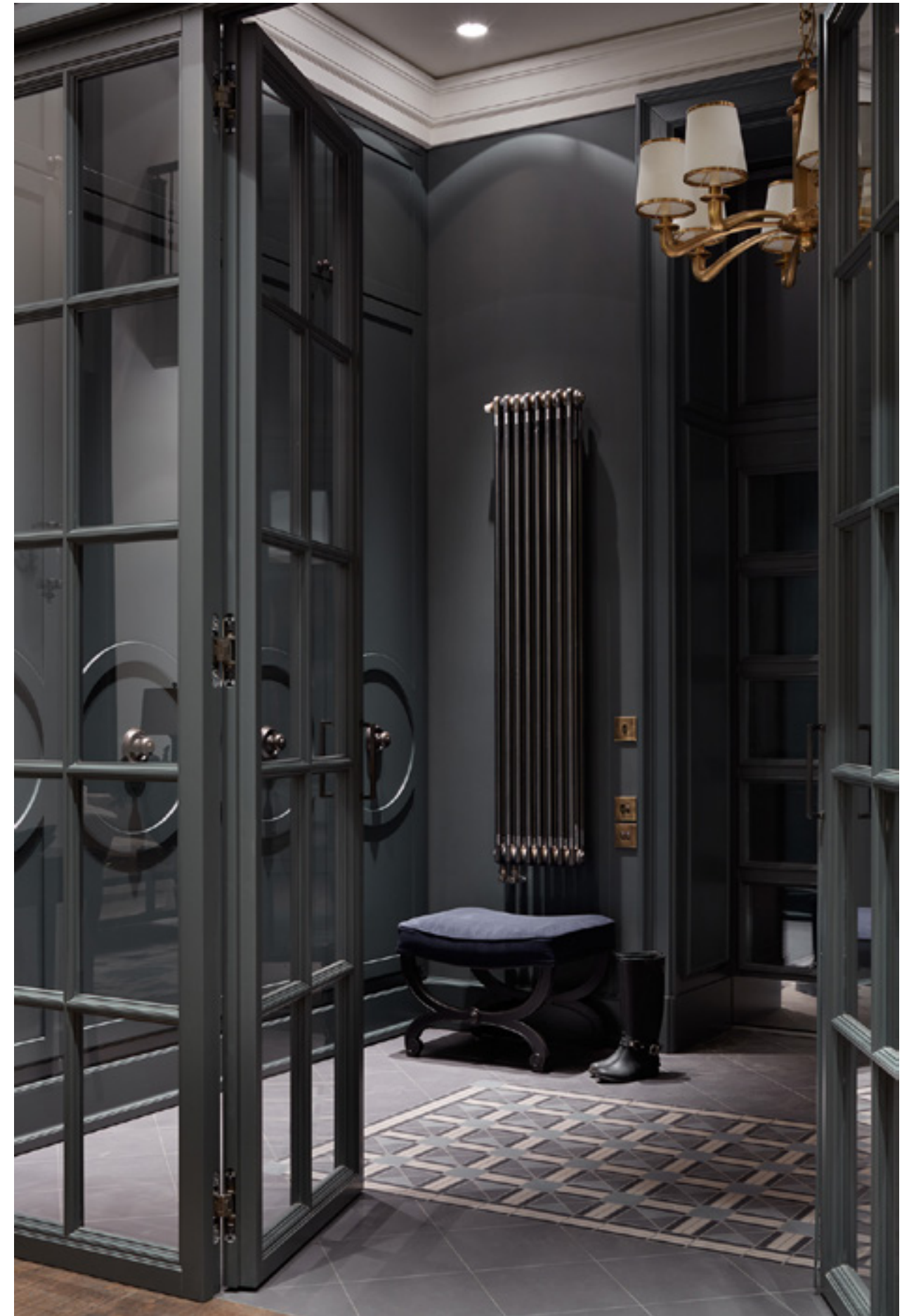
Photo credit – Sergey Ananiev

Bykovo House

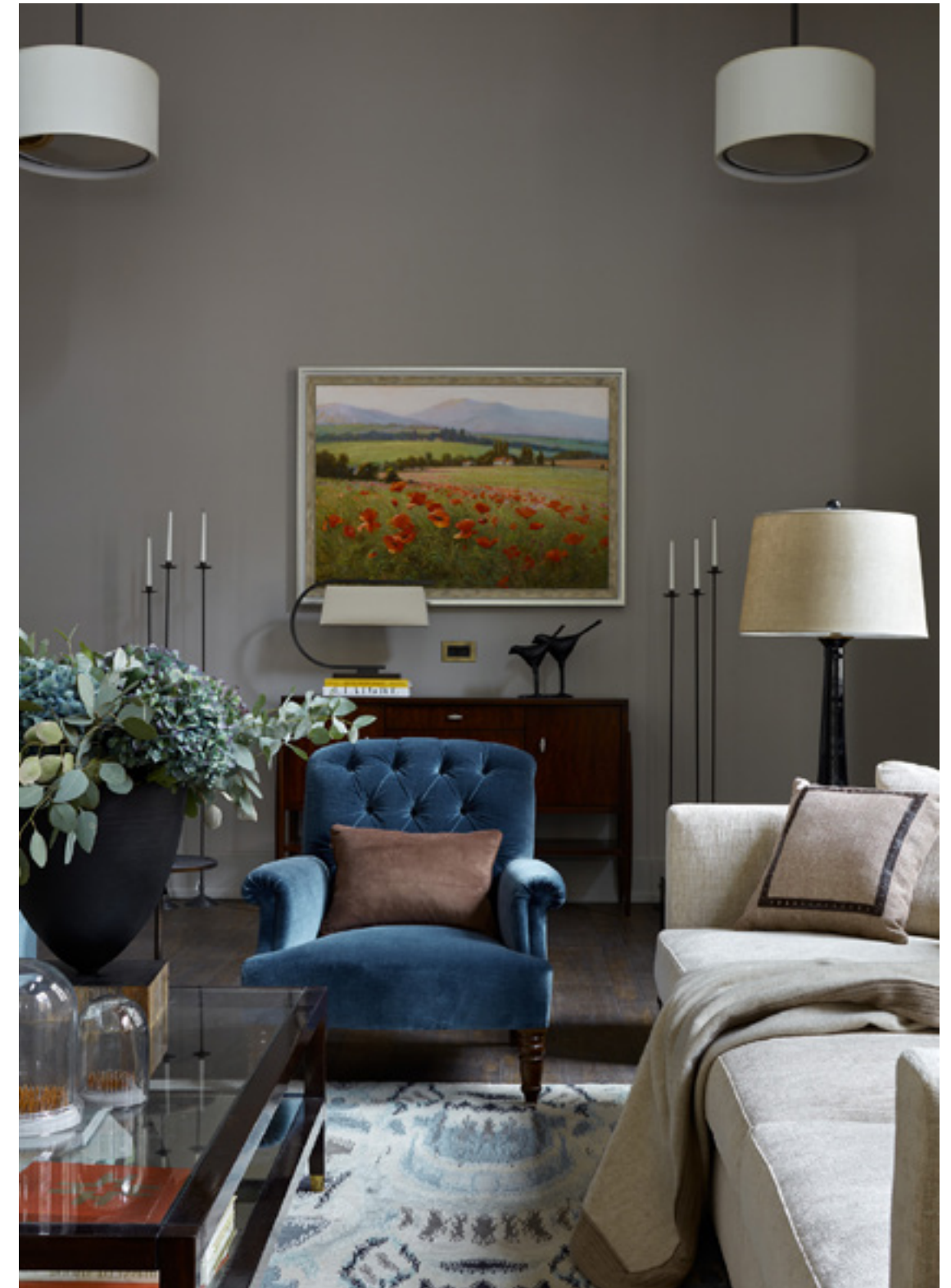
There was a client - a lady with a good nose for business - who approached our Bureau with a request to create the interiors for her personal home, which is situated on a private plot in the city suburbs. She quickly decided what she wanted, and put her implicit trust in the hands of professionals. She wanted a home that was snug, comfortable, and designed with our house reputation for restrained elegance that typifies the work of Oleg Klodt.

Even before we began, the house had a good floorplan layout - large rooms, high ceilings, and enormous windows, with lots of space and inspiration. The restricted budget for the project quickly helped determine the materials - the architects and designers devised the space in accordance with the client's wishes and stylistic preferences. The interior walls were repositioned, and the new interior was filled out with individually-created furniture pieces and items.

The designers made use of simple decorative materials - plasterboard, wallpaper, and designer-style furnishings including an aged-effect floor. Instead of taking a conventional approach and laying out the interior uniformly throughout, the architects created a house consisting of different zones, each of which has its own mood - yet with unifying elements of comfort and softness. The end result is a simple and charming Provencale-style interior. All of the different elements are holistically combined within the image of a building located in an old village made up of large plots of land and magnificent soaring old trees.

































VODNIY STADION - THE AQUA STADIUM, Moscow, Russia

Size: 160 sq. m.

An apartment within the building of a 1930s Stadium

In the middle of the twentieth century this stadium – built on the banks of a large reservoir in the north part of Moscow – was a very popular place for relaxation. Continuing this tradition, our clients asked as architects to make their unique and beautiful apartment a place for relaxation, where their family and two children could spend the end of the week – a little oasis of calm amid the great metropolis.

The address had previously been used as offices, so we completely remade the floorplan layout. We raised the ceilings, exposing the metal girders so that they featured within the interiors, and expanded the available space. When considering the layout, the architects tried to exploit all the possibilities the apartment offered. For example, the master bedroom is laid out so that on waking in the morning, the sun can be seen reflected in the water. There is a tower attached to this single-storey apartment, in which a two-storey children's zone was planned – with a glass partition between the floors, so that natural light would penetrate to the lower of the two floors.

This light and airy modern interior was conceived almost instantly. The magnificent views from the panorama windows quickly set the mood for the materials from which the interiors were created – wooden floors, and simple painted walls. The entire interior is set off with a combination of unusual objects, colours and textures.



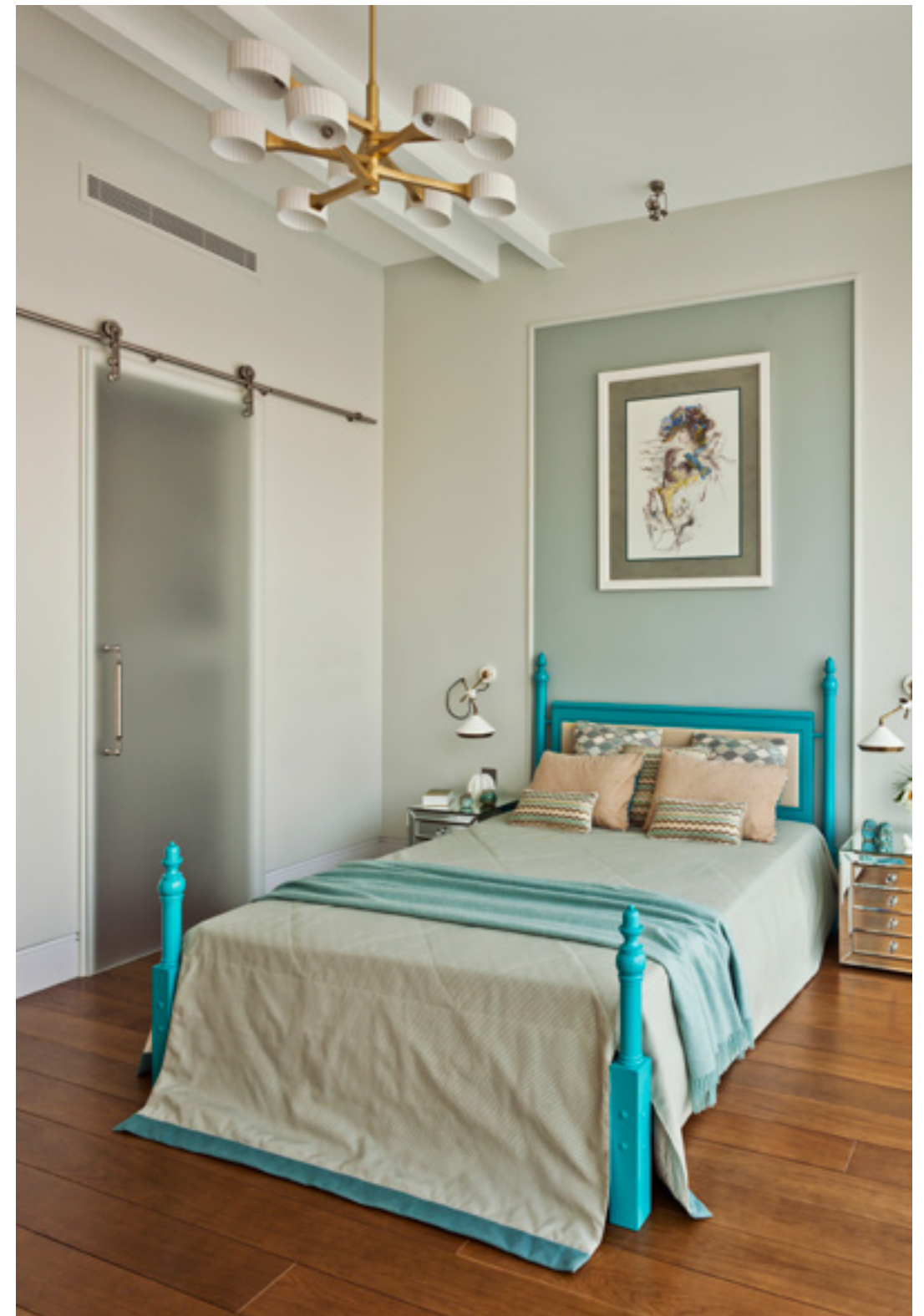


















RUBLEVKA FAMILY RESIDENCE, Moscow, Russia

Size: 700 sq. m.

Constructivism House 1930s - 1940s

Our client is a true design connoisseur who adores Soviet-era Constructivism and art from the early 20th Century. He set us the challenge of reconstructing an existing building - and turning it into a country residence in the late-Constructivist style. The interiors were to correspond with the aesthetics from this period - a modern, functional approach replete with historic objects and artwork. The designers collected thousands of items including vintage memorabilia and antiques from all over the world. By carefully combining these with modern replicas, it became possible to create an interior in keeping with the taste of the 1930s and 1940s.

Every detail was painstakingly selected, even through to the electricity sockets. This carefully curated collection of heritage classics lives on as they are used in the family's modern life.

Shwag





















GOLDEN KEYS APARTMENT, Moscow, Russia

Size: 250 sq. m.

Playful Charm

It's very rare for architects to meet a client who is ready and willing to accept almost any kind of approach. The challenge was accepted – and the architects took the opportunity for little jests and pranks at every step. The final interior has an atmosphere of restrained kitsch, with incongruous mixtures – bright colours and contemporary shapes in giant classical stucco; level concrete floors with marble-faced walls; floors laid with classic French honey-tone herringbone alongside the kind of multicoloured concrete tiles you can find in street architecture in Spanish towns.

The designers intentionally used items which don't match – either in style, or shape, or appearance. The interiors are filled with unusual items, which the designers gathered from every corner of the globe: an unevenly-proportioned chest of drawers clad in leather, Russian abstractionist paintings, bizarre Belgian light-fitting made of tubes, a specially-rusted extractor hood above the blue granite kitchen island...

It's an emotionally-charged interior that manages to be bright, yet calm

















THE HOUSE ON KIEVSKOE CHAUSSEE, Moscow, Russia

Size: 500 sq. m.

Where every detail has a story

This project is like a child's hand-crafted construction set, in which literally everything has been recycled. We barely have space to list all of the innovative design solutions: the complex 'twisted' form of the stairs with their ornamental handrail; the backlit onyx panels on the walls, plaster panels, glass, fabrics and pearl; on the floors there are four different kinds of marble.

We selected the exact colour and texture of each textile and item to create the most subtle of tone-on-tone interiors. Elements may sometimes be invisible but the spaces have a life of their own where perceptions can change every second, depending on lighting, the angle of view and how closely you take a look.



































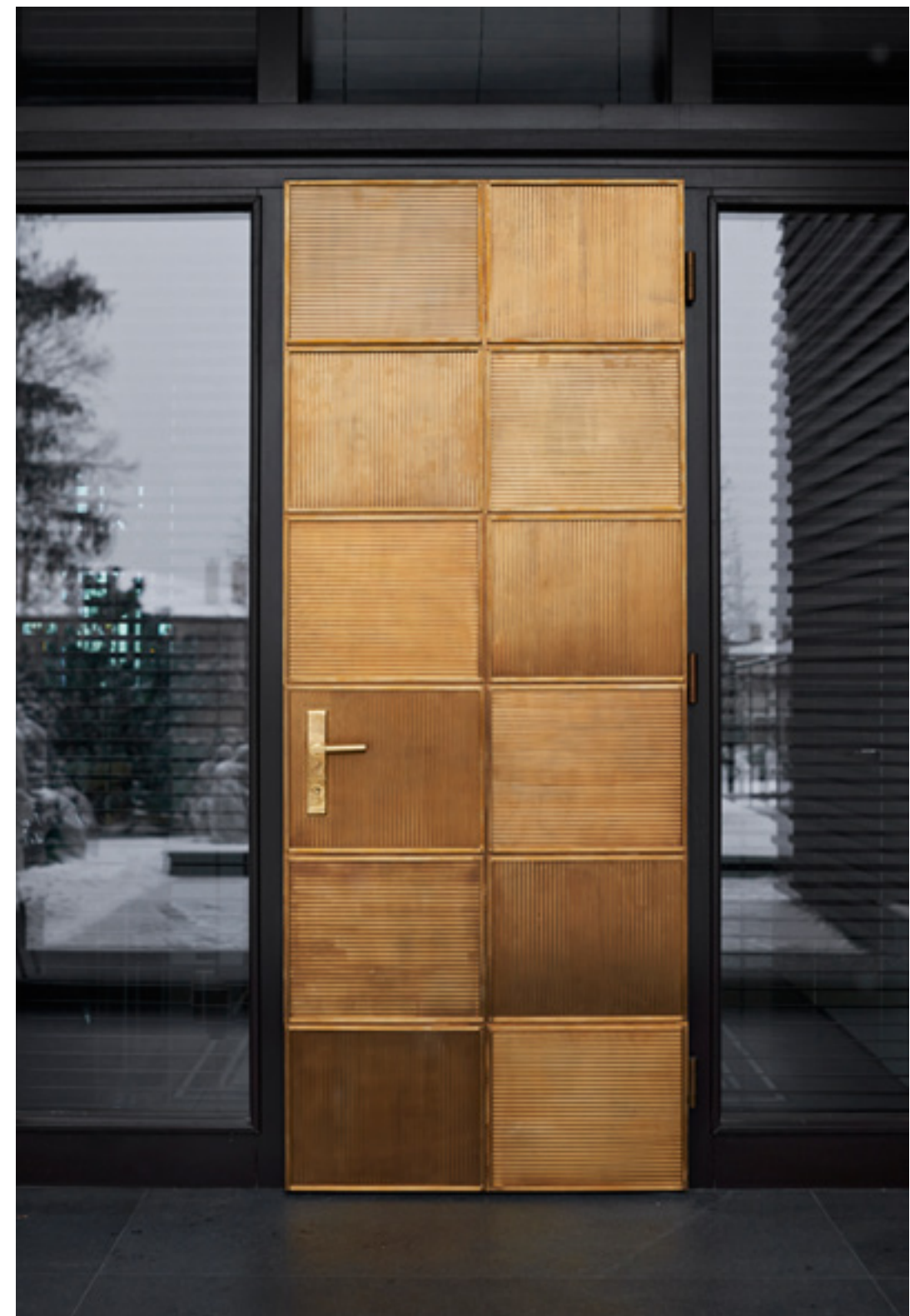
















TVERSKOY BOULEVARD, Moscow, Russia

Size: 285 sq. m.

Contemporary interiors with an Art-Deco twist

The tone of these interiors is set by the contrast of lightwood with darkwood, the beige-brown hues of the fittings and the use of metal and rich materials. Deep-relief columns are set into the design, as well as the lattice windows in the living room. The top-end materials selected in neutral tones and the bold shapes of the furniture are offset by unusual accents in the furnishings — such as the living-room coffee table.

The elegantly sparse contemporary design of the interiors is softened throughout the apartment by the carefully selected and layered fabrics. All the curtains were chosen from within one colour range but the fabrics vary with the result that each set of curtains hangs in a slightly different way.

Shwag



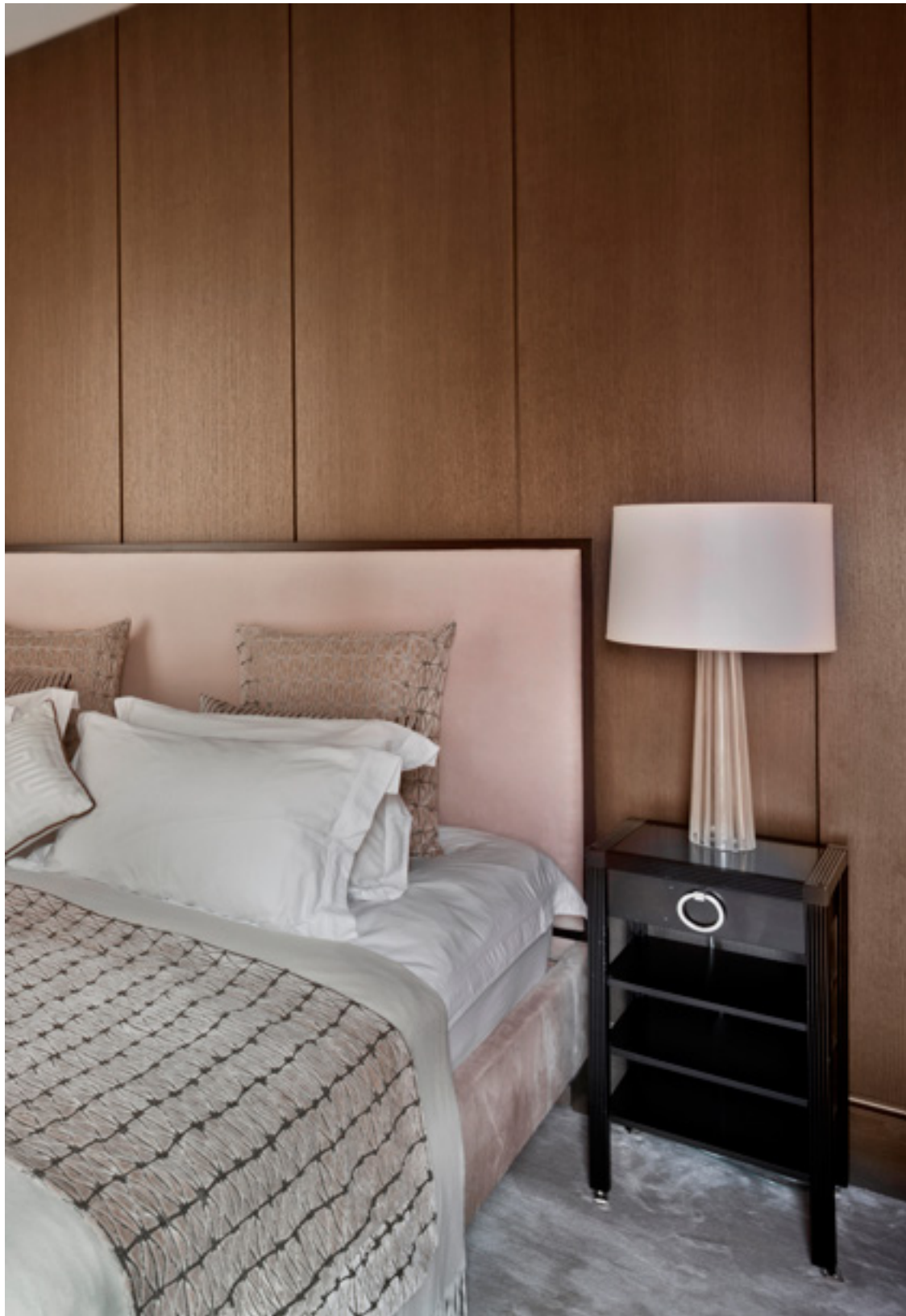


















POKROVKA, Moscow, Russia

Size: 140 sq. m.

A contemporary interior in a historic building

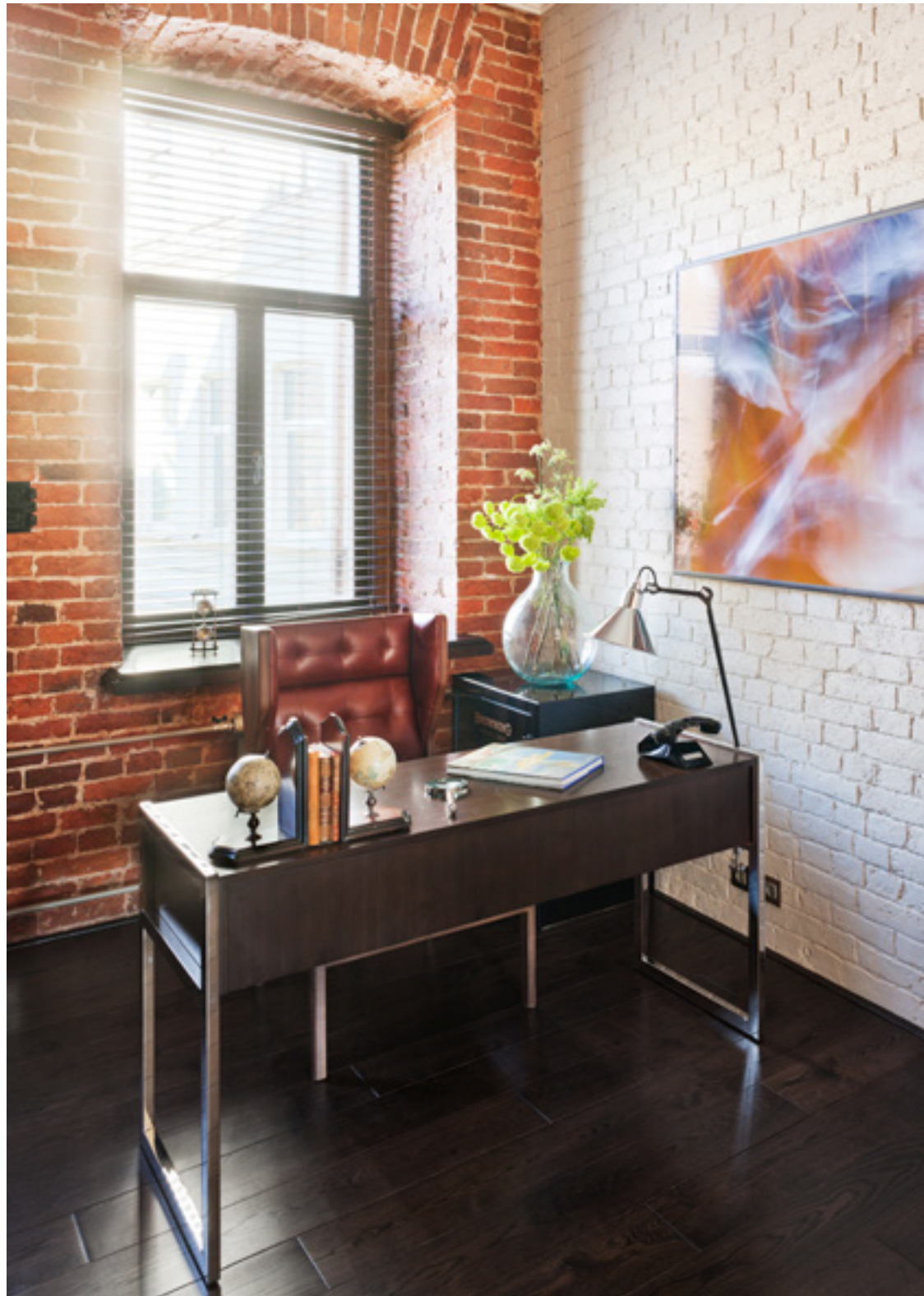
The building which houses this apartment was built in the early C20th, originally as a mansion apartment block operating for the profit of the neighbouring church. Oleg Klodt replanned the interiors, with the idea of creating a large central open-plan space. One of the most unusual design features was the mirrored wall, which divides the open-space area from the bathroom which adjoins it.

We'd never previously used brick as a finishing material - but in this project the original pre-1917-revolution brickwork was still in place, alongside the old heating network, and the chimneys. This 'loft'-style approach contrasts neatly with the high-end simply-figured furniture.

















MOSFILMOVSKAYA, Moscow, Russia

Size: 190sq. m.

A classic with a Belgian twist

The main design challenge we encountered when creating the open-space living zone was in laying out the kitchen. Our aim was to combine the lounge with the kitchen in such a way that the room didn't feel crammed with pieces of furniture. This meant designing the kitchen with a very neutral approach: a simple white range without handles and the working area hidden within the kitchen island.

The interior style is a fusion of elegant features and items. Against a monochrome substrate background we combined different shades of purple and blue, from calm through to strong tones, and utilised fabrics with differing shine and depth (alcantara, velour, velvet, and so on). Refined plaster moldings partner harmoniously with nineteenth-century paintings in rich gold frames.



















STAROVOLYNSKAYA, Moscow, Russia

Size: 150 sq. m.

In a restrained style with some aspects of art-deco

We solved a number of issues while working this project: the space was quite small, the layout was uncondusive, and the clients came with their own Oriental cultural expectations.

We designed the interior around a series of contrasts – a densely dark wenge floor, white wall, beige and brown hues, diluted with turquoise tones. We resolved the layout issues by careful attention to the use of space. Built-in bulkhead wardrobe with transparent glass shelves which extends for the entire length of the corridor. In the bedroom, the unideal location of the bed in the master bedroom was solved by creating a complex back-structure for it. The kitchen was knocked-through to connect with an open-space lounge-dining area divided by partitioned area. We made extensive use of wood which we counterbalanced by the use of metal and fabrics. The fabrics are substantial in nature – velvet, silk, Alcantara – which is a further reflection of the client's own culture.

Visitors feel enveloped in the interior, as if in a cup of cappuccino with foamy froth, giving a sensation of comfort and tranquility.





















SAVVINSKAYA, Moscow, Russia

Size: 300 sq. m., plus 150 sq. m. terrace

A 'new classic' style interior

We created an entirely new floorplan for this project, by combining two apartments into one and replanning, in the greatest of detail, all of the space. We redesigned and built everything afresh: the panels, the portals, the built-in cupboards, the doors, the floor-design in the lounge, a mosaic created from four kinds of marble in the toilet... On top of that, as in all the projects our bureau undertakes, we introduced a lot of free-standing furniture throughout the apartment.

Another major feature of this project is the 150-metre terrace, which offers stunning views of the waterfront — or of the river and downtown Moscow.





















THE HOUSE IN PAVLOVO VILLAGE, Moscow, Russia

Size: 600 sq. m., 200 sq. m., 70 sq. m.

A classic American interior

The interiors of this domestic residence were designed with a large amount of American furniture and lighting, set against a simple oak board interior with light walls and unobtrusive moldings, as well as our in-house-designed furniture. There are plenty of large open areas, a simple staircase, and enormous windows – all adding to the charm and feeling of the home.

The three different buildings on this site were designed by the architects using somewhat separate stylistic approaches. The main house has been decorated with travertine stone and the guest house with larch board, while the summer pavilion is a light wooden construction. It's this combination of contrasting elements that creates something unique in this extraordinary architectural ensemble.

















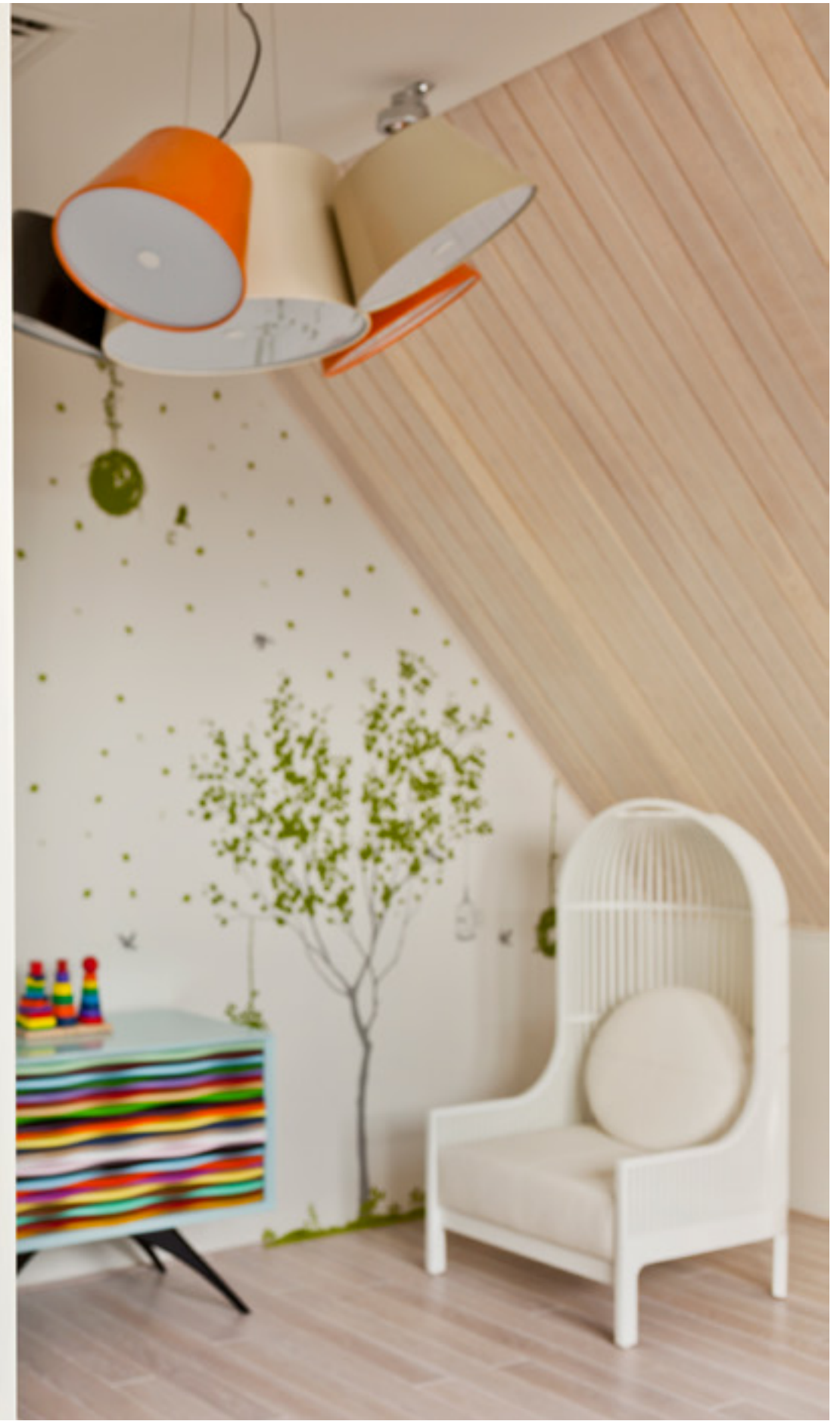




















BOR'BY SQUARE, Moscow, Russia

Size: 120sq. m.

Old-Moscow Style with a French accent

This apartment is located within an old building in Moscow city centre. The interior reflects the client's aspiration - the impression of an apartment passed down through the family from generation to generation over many years. This idea inspired us to design interiors suggesting the style of Moscow during the heady years of the 1920s and 1930s - but with a French accent.

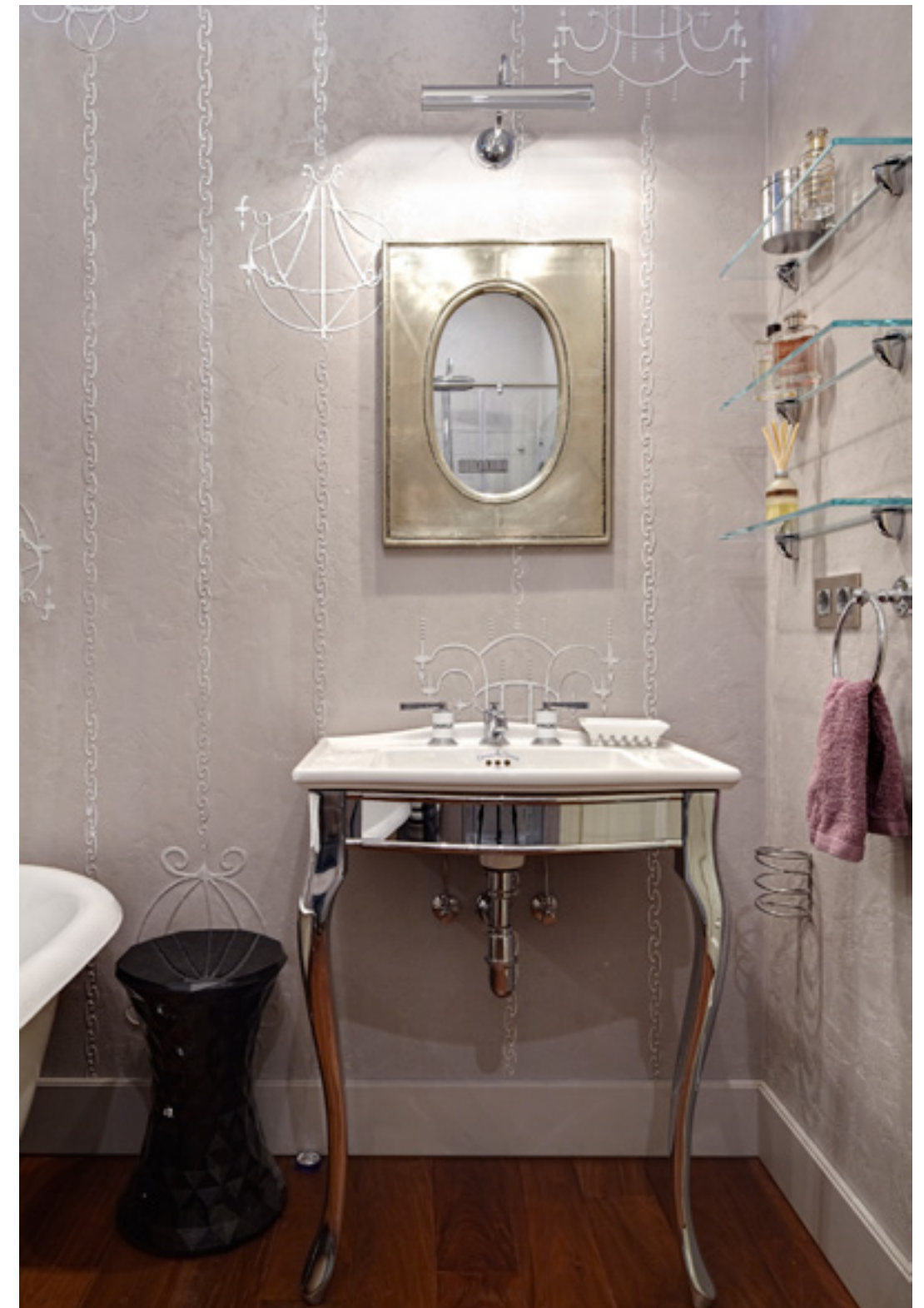
The chimney-places of the old building survived, and were worked into the design to introduce a stove in the Old-Moscow style in the bedroom, and a fireplace in the dining room. All of the fittings were purchased in antique shops in Paris and Amsterdam and the parquet flooring was laid out in the 'French herring-bone' pattern. Probably the most eloquent compliment about this project comes from the client: "No matter how widely I travel, something is always drawing me homewards, to my own apartment. There's nowhere I feel more at ease and comfortable than in my own apartment".













HOUSE IN THE NETHERLANDS, Amsterdam, The Netherlands

Size: 320sq. m.

European constructivism of the 1960s period

This is a building with a special history, designed in the last century and used as an artist's studio. The cornerstone of our concept was to preserve the appearance and architectural vernacular of the building, while making it a welcoming and comfortable place to live for its new owners: a family with two children. We were able to increase the living-space area, as well as convert the orangerie into a kitchen-dining space.

We laid out the interiors in a Dutch minimalist style. The artist who had lived here - Gerard Schaperkötter - had created a very unusual atmosphere in the house, and his paintings became the inspiration for the interiors. The final result was a very understated, simple and restrained interior that nonetheless remains a comfortable living space: while the building itself has retained its essential character, while gaining a slightly more contemporary edge.













THE HOUSE AT DMITROVKA, Moscow, Russia

Size: 180sq. m.

A simple yet stylish modern home

The building's simple geometrical shape (with a basic rectangular floorplan) was the inspiration for the huge overhanging flat roof, which extends over the deep balconies on the upper floor. The upper level itself projects outwards slightly above the ground floor, on diagonal beam structures. The traditional wooden facing of the exterior walls is partnered with a large angled stone wall that supports the building on one side.

Visitors to the house immediately find themselves inside a tall and airy space, and don't even notice that the actual size of the building is, in fact, relatively small. Simple and natural materials are used for the interior finishings – solid stained larchwood board for the floorings, plywood ceilings, painted walls, and curtains from simple fabrics. A collection of handicrafts and items which the owners have collected from their travels all over the world create a distinctive ambience. It's a special and comfortable interior with its own calm aura.













NAGORNIY BOULEVARD, Moscow, Russia

Size: 132 sq. m.

An elegant interior in New York loft style

The client is a successful young lady. She asked us to create a contemporary, stylish interior, where she could live comfortably with her family. The main issue was the restricted size of the apartment, in which she needed to arrange all the zones of strategic importance for her life - the kitchen, lounge, bedrooms for parents and children, a bathroom and several wc's, a laundry room, and her study.

The main approach we took in the design concept was a balance of contrasts. The wooden blinds contrast with the light coming in from the windows, which are set in dark frames. The palette of colours is based on a combination of black, grey, and light-grey tones, set off with focuses of brighter shades - yellow and turquoise (the chairs), and orange (the scatter cushions on the sofa). There are levelled concrete floors throughout the apartment, and there is almost no textile used in the decoration. Comfort and softness is instead provided for with soft carpets, which make a harmonious combination with the tactile surfaces.

The lounge is dominated by bright colours. The minimalist furniture recalls the swinging Sixties, and the decor objects create a special atmosphere. There is a view to the kitchen from the lounge - the transparent chairs have bright-blue upholstery, while the dining-table is made from circular sections of plywood with a black top, with a textured metal apron. The master bedroom is decorated with panels of distressed glass, which highlight the tall tailor-made headboard, and the wall decorations. The children's bedroom was specially designed for a young girl who is in love with everything British. The design of the room is based on British motifs and laid out in thematic British colours.

We designed a project in which the different spaces in the apartment blend into each other, and so the overall feeling is one of holistic integrity. The overall result is a restrained and elegant interior, which combines the best of Belgian motifs with the style of a New York loft.























OLEG KLODT ARCHITECTURE & DESIGN

If you would like more information, to discuss a project, or discuss collaboration with us — please get in touch with us!



Address

Nastavnicheskiy pereulok 17/1,
Moscow, Russia

General

+7 (495) 221 11 58
info@olegklodt.com

Careers

hr@olegklodt.com

PR & International Communications

+7 925 062 93 25
pr@olegklodt.com
Nikolay Flerov

Supplier inquiries

+7 (495) 221 11 58
izumrud@olegklodt.com
Izumrud Paramazova

