

ARCHITECTURE & DESIGN BY OLEG KLODT

# Contents

## Residential Interiors

Bureau	3
Usovo House	5-14
Barcelona Apartment	15-21
Bykovo House	22-37
Vodniy Stadion - The Aqua Stadium	38-47
Rublevka Family Residential	48-57
Golden Keys Apartment	58-65
The House on Kievskoe Chaussee	66-89
Tverskoy Boulevard	90-99
Pokrovka	100-107
Mosfilmovskaya	108-115
Starovolynskaya	116-125
Savvinskaya	126-135
The House in Pavlovo Village	136-153
Bor'by Square	154-159
The House in The Netherlands	160-165
The House at Dmitrovka	166-171
Nagorniy Boulevard	172-183

## Commercial Interiors

The Queen V	185-192
Retail space for LOFT Design by...	193-199
The Strauss Beauty Salon	200-204
The Voentorg Office	205-209
The Aveda Beauty Salon	210-215

Contacts	216
----------	-----







## Oleg Klodt

Oleg Klodt was born into an artistic family, which traces its origins back to Pyotr Karlovich Klodt, the sculptor of Imperial St Petersburg. It was unsurprising that Oleg, too, would follow a career connected with art. Oleg Klodt launched his architectural practice shortly after he graduated from the Moscow Architectural Institute.

Oleg Klodt creates classic interiors, characterised by their elegance and chic, and fashioned with innate intelligence.

One of the characteristic traits which manifest themselves in his work is paying attention to the finest level of detail, and creating bespoke pieces of furniture and decor that were individually designed, down to the level of door-knobs and window handles. The delicacy of this approach lends an exclusivity and individuality to each of his interiors.

## Anna Agapova

Anna Agapova is a Partner at Oleg Klodt Architecture & Design, and Head of the Design Department. Anna was born into a family of civil engineers - who spent centuries laying railroads and building cities. Her personal journey into the world of architecture began with lighting. She studied urban development at Moscow State University - where she looked at issues of the electrification of cities, with special studies in the field of lighting. In addition to her responsibilities in the top management of the company, her profile also involves the design conception for all ongoing projects.

## Bureau

We founded the Oleg Klodt Architectural Bureau in 2000, with the aim of designing interiors to the highest standards — both for private homes, and for businesses and organisations. Our portfolio includes scores of projects we've completed for private apartments and homes — alongside interiors we'd designed for hotels, restaurants, and stores. Our bureau's style may be eclectic — but our understated and consistent approach remains our hallmark.

The creative tandem of Oleg Klodt and Anna Agapova has been catalytic in establishing and developing the bureau's work. While Oleg Klodt works with brevity and clarity in a traditional style, Anna Agapova stays ahead of the trend in the way she completes interiors — bringing a complex eclecticism to the classical format, with new textures and shapes.



OLEG KLODT  
ARCHITECTURE  
& DESIGN

RESIDENTIAL INTERIORS





## USOVO HOUSE, Moscow, Russia

Size: 1000 sq.m

Completion date: spring 2017

Photo credit - Manolo Yllera

# Usovo House

Bureau created this project for a young family with a small child. They'd already been our clients before - we did their apartment two years ago. This building is located thirty kilometres away from the city centre. There were two buildings on the ground plot - although only the exterior walls remain from their original design. The entire space has been rethought and replanned. Our brief was to leave the existing structure in place, and use it to create the feeling of a European family home - where the painting collection owned by the clients could be harmoniously displayed. The approach to the space was similar to the Rijksmuseum in Amsterdam - whose walls, in complex shades of grey, make the perfect background for paintings. The final result was an interior in which the bureau succeeded in creating a lyrical space in which classical artworks and antiques, collected from many world journeys, sit perfectly alongside modern furniture, materials and architecture. The designers aimed to make their involvement as unobtrusive as possible - so that whichever room you visit, the main feeling you have is of the personal style and taste of the clients. A unique element in the project is the elegant, though bold-structured staircase, which was tailor-made to individual designs - and which is topped by the world's most spectacular chandelier.

The house is full of guest rooms - which enabled the designers a playful approach to light, and the change to use William Morris wallpaper to create a number of alternative different worlds... which lead us back into the Pre-Raphaelite era. The Master zone, for the owners, is a magnificently engaging space, with its bay window and entrancing textile wallpaper - and leads off into two different bathrooms, male and female. Each reflects a different aspect of the owners' personalities. These are the only rooms in the house where marble is featured.

The clients are regular mountain-skiers, and take inspiration from Alpine architecture - and wanted to recreate something similar in their own home. This is how the guest-house became transformed into a Spa, as the clients requested. There are beams lining the ceilings, aged wooden walls with a smoked-larch hue, and architecturally-exceptional portals poured from liquid concrete. The finishing touch is the tall fireplace with an antique firewood-box.





















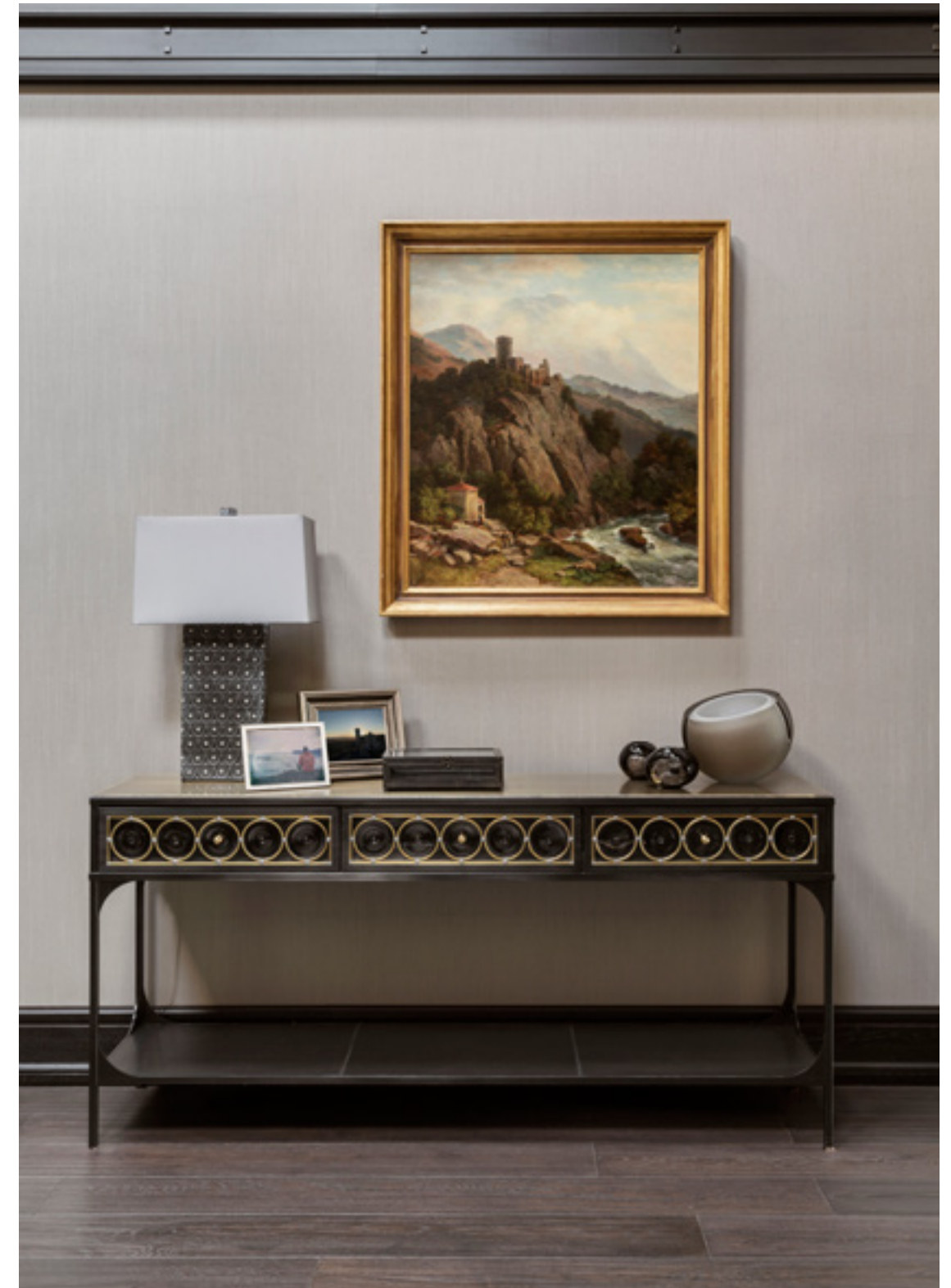




















## BARCELONA APARTMENT, Barcelona, Spain

Size: 150 sq.m

Completion date: spring 2016

Photo credit – Manolo Yllera

# Spirit of the Time and Cult to Beauty

The historical value of this building almost inevitably dictated the choice of the architectural practice to whom we would entrust its protection and enrichment. Namely, the team of Oleg Klodt and Anna Agapova, who ably envisioned and oversaw its interior design, and with whom the owners of the apartment and the creative team have had a strong and successful partnership over many years.

The space, with its long meandering corridors and ceilings disappearing into lofty heights demanded special treatment, to protect and emphasise the unique details of interior design which, ultimately, define its character and style. The new project of Oleg and Anna is possibly their most touching homage to Barcelona. Its uniqueness is first and foremost about the reverence with which the authors interpret the historic heritage of the ancient Barcino. Oleg and Anna have chosen to observe, respect and draw upon existing elements of decorative workmanship, making these reference points and design landmarks for their modernizing transformations.

It is this mosaic that has become the hero of the Barcelona project: a sculptural minimalism of space, an abundance of light and uplifting, lofty ceilings have become the perfect setting for the gem of the mosaic theme which authors of the project have tried to capture with their inherent sensitivity and subtlety.

Oleg and Anna have made a strategic decision to emphasize the advantages of the interior environment by placing accents in an ingenious way. They have chosen white as a background; neutral walls favorably accentuate active details which visibly dominate the space, simultaneously filling even small areas with air and light.

Speaking of retrieval: the discovery and sensitive extraction of vintage features, often disguised under thick layers of paint by previous owners, utterly fascinates Anna. She decided to restore antique locks, door handles and window hinges by converting them to their pristine state. So, the team patiently unearthed missing parts and other neglected treasures at Barcelona bazaars and flea markets. The result exceeded even the boldest of expectations: the shine has returned to the complex patina of ancient materials and metals and has reinvigorated the confident charm and glamour of the old house.





























## BYKOVO HOUSE, Moscow, Russia

Size: 600 sq.m

Completion date: autumn 2016

Photo credit – Sergey Ananiev

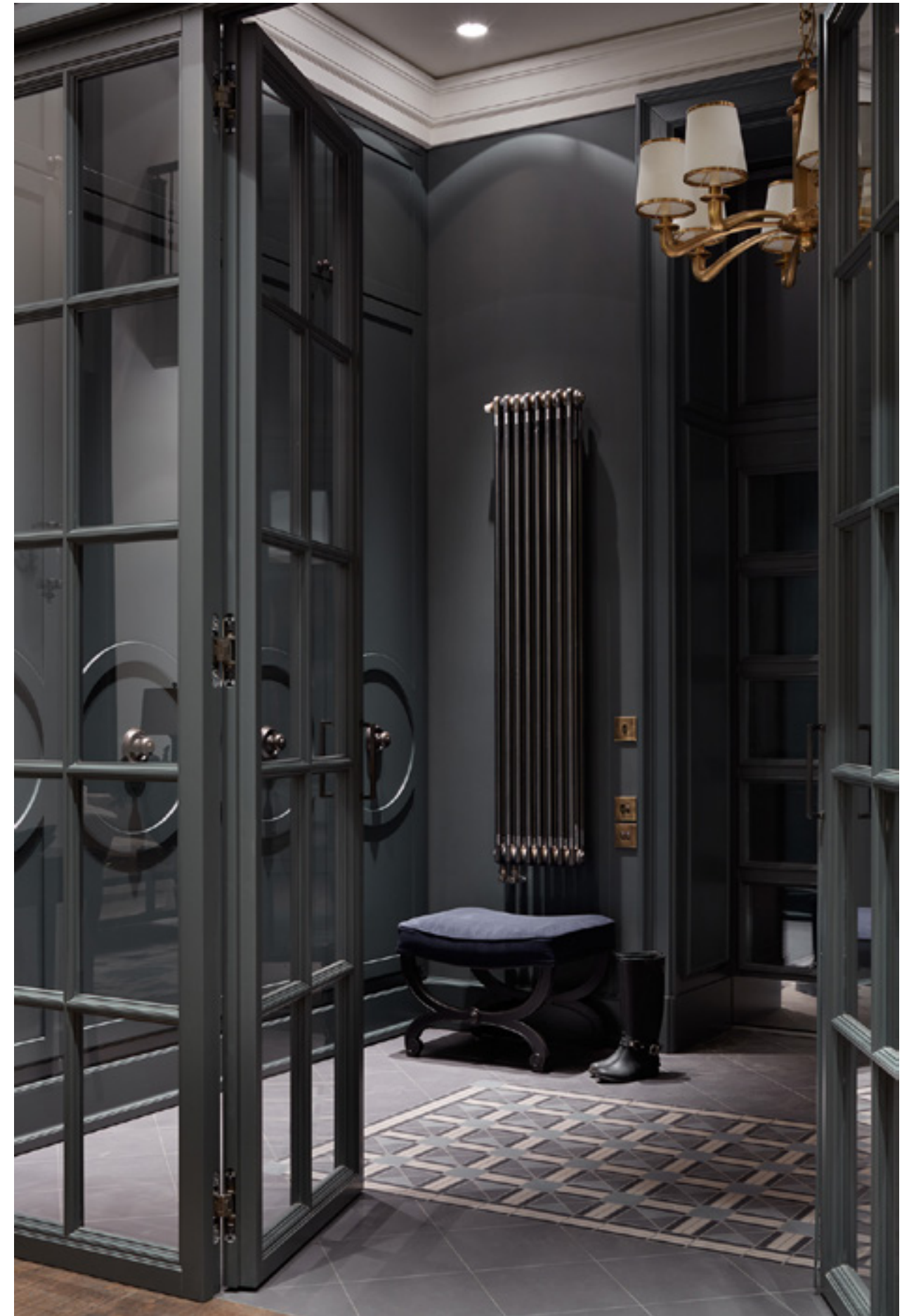
### Bykovo project

There was a client - a lady with a good nose for business - who approached our Bureau with a request to create the interiors for her personal home, which is situated on a private plot in the city suburbs. She quickly decided what she wanted, and put her implicit trust in the hands of professionals. She wanted a home that was snug, comfortable, and designed with our house reputation for restrained elegance that typifies the work of Oleg Klodt.

Even before we began, the house had a good floorplan layout - large rooms, high ceilings, and enormous windows, with lots of space and inspiration. The restricted budget for the project quickly helped determine the materials - the architects and designers devised the space in accordance with the client's wishes and stylistic preferences. The interior walls were repositioned, and the new interior was filled out with individually-created furniture pieces and items.

The designers made use of simple decorative materials - plasterboard, wallpaper, and designer-style furnishings including an aged-effect floor. Instead of taking a conventional approach and laying out the interior uniformly throughout, the architects created a house consisting of different zones, each of which has its own mood - yet with unifying elements of comfort and softness. The end result is a simple and charming Provencale-style interior. All of the different elements are holistically combined within the image of a building located in an old village made up of large plots of land and magnificent soaring old trees.

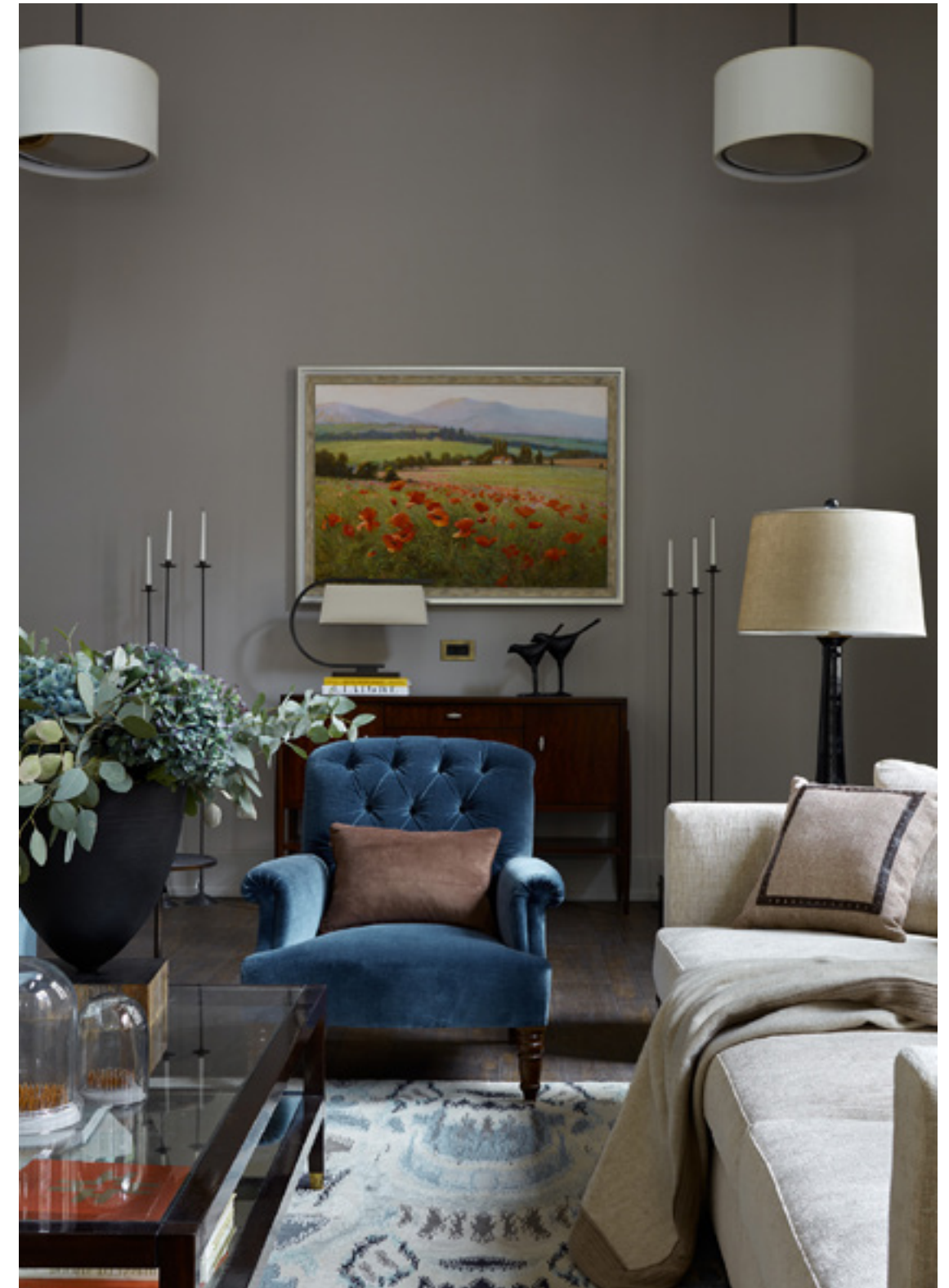
































































## VODNIY STADION - THE AQUA STADIUM, Moscow, Russia

Size: 160 sq. m.

# An apartment within the building of a 1930s Stadium

In the middle of the twentieth century this stadium – built on the banks of a large reservoir in the north part of Moscow – was a very popular place for relaxation. Continuing this tradition, our clients asked as architects to make their unique and beautiful apartment a place for relaxation, where their family and two children could spend the end of the week – a little oasis of calm amid the great metropolis.

The address had previously been used as offices, so we completely remade the floorplan layout. We raised the ceilings, exposing the metal girders so that they featured within the interiors, and expanded the available space. When considering the layout, the architects tried to exploit all the possibilities the apartment offered. For example, the master bedroom is laid out so that on waking in the morning, the sun can be seen reflected in the water. There is a tower attached to this single-storey apartment, in which a two-storey children's zone was planned – with a glass partition between the floors, so that natural light would penetrate to the lower of the two floors.

This light and airy modern interior was conceived almost instantly. The magnificent views from the panorama windows quickly set the mood for the materials from which the interiors were created – wooden floors, and simple painted walls. The entire interior is set off with a combination of unusual objects, colours and textures.

















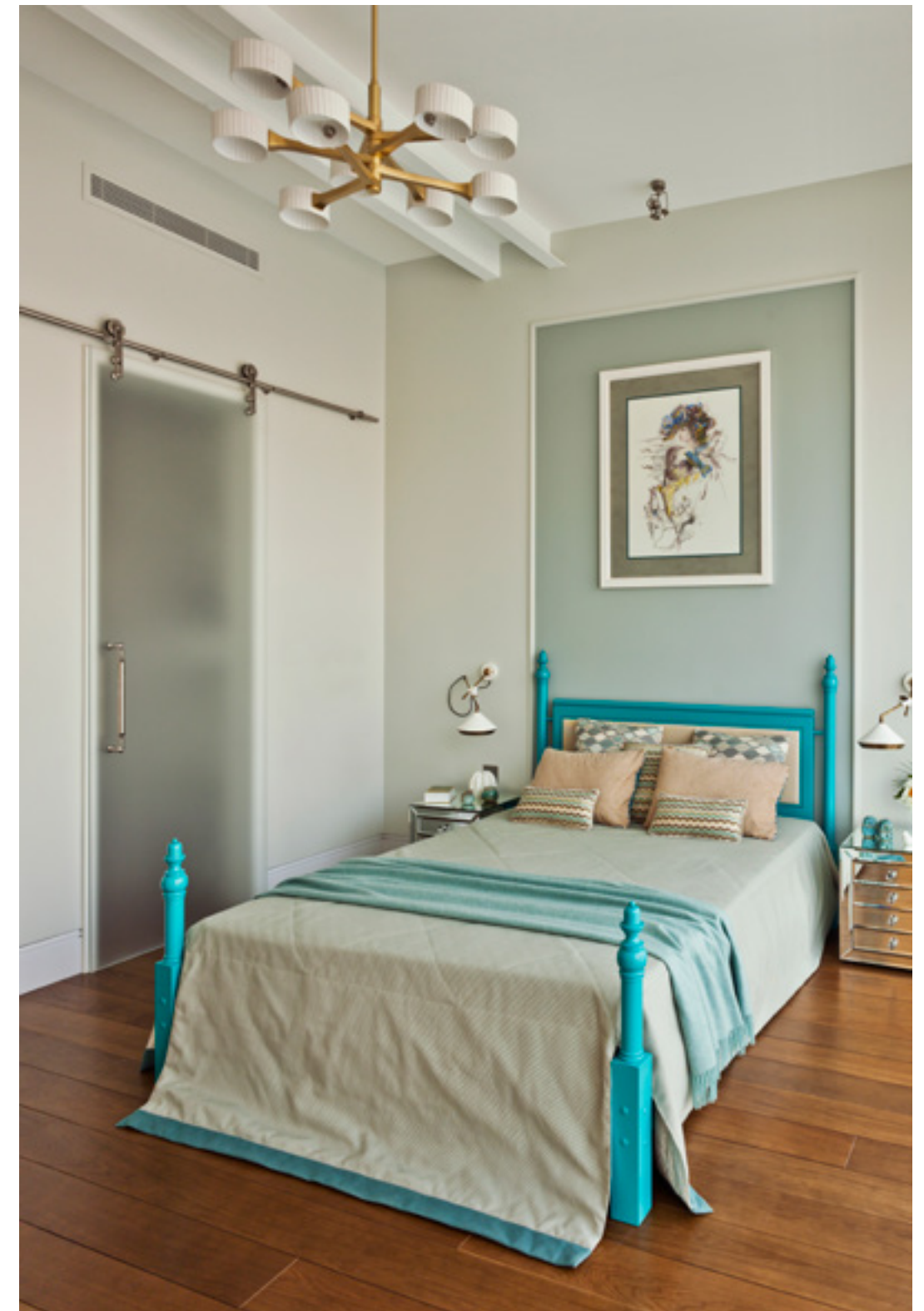
























## RUBLEVKA FAMILY RESIDENCE, Moscow, Russia

Size: 700 sq. m.

# Constructivism House 1930s - 1940s

Our client is a true design connoisseur who adores Soviet-era Constructivism and art from the early 20th Century. He set us the challenge of reconstructing an existing building - and turning it into a country residence in the late-Constructivist style. The interiors were to correspond with the aesthetics from this period - a modern, functional approach replete with historic objects and artwork. The designers collected thousands of items including vintage memorabilia and antiques from all over the world. By carefully combining these with modern replicas, it became possible to create an interior in keeping with the taste of the 1930s and 1940s.

Every detail was painstakingly selected, even through to the electricity sockets. This carefully curated collection of heritage classics lives on as they are used in the family's modern life.

*Shwag*









































## GOLDEN KEYS APARTMENT, Moscow, Russia

Size: 250 sq. m.

### Playful Charm

It's very rare for architects to meet a client who is ready and willing to accept almost any kind of approach. The challenge was accepted – and the architects took the opportunity for little jests and pranks at every step. The final interior has an atmosphere of restrained kitsch, with incongruous mixtures – bright colours and contemporary shapes in giant classical stucco; level concrete floors with marble-faced walls; floors laid with classic French honey-tone herringbone alongside the kind of multicoloured concrete tiles you can find in street architecture in Spanish towns.

The designers intentionally used items which don't match – either in style, or shape, or appearance. The interiors are filled with unusual items, which the designers gathered from every corner of the globe: an unevenly-proportioned chest of drawers clad in leather, Russian abstractionist paintings, bizarre Belgian light-fitting made of tubes, a specially-rusted extractor hood above the blue granite kitchen island...

It's an emotionally-charged interior that manages to be bright, yet calm

































## THE HOUSE ON KIEVSKOE CHAUSSEE, Moscow, Russia

Size: 500 sq. m.

# Where every detail has a story

This project is like a child's hand-crafted construction set, in which literally everything has been recycled. We barely have space to list all of the innovative design solutions: the complex 'twisted' form of the stairs with their ornamental handrail; the backlit onyx panels on the walls, plaster panels, glass, fabrics and pearl; on the floors there are four different kinds of marble.

We selected the exact colour and texture of each textile and item to create the most subtle of tone-on-tone interiors. Elements may sometimes be invisible but the spaces have a life of their own where perceptions can change every second, depending on lighting, the angle of view and how closely you take a look.

































































































## TVERSKOY BOULEVARD, Moscow, Russia

Size: 285 sq. m.

# Contemporary interiors with an Art-Deco twist

The tone of these interiors is set by the contrast of lightwood with darkwood, the beige-brown hues of the fittings and the use of metal and rich materials. Deep-relief columns are set into the design, as well as the lattice windows in the living room. The top-end materials selected in neutral tones and the bold shapes of the furniture are offset by unusual accents in the furnishings — such as the living-room coffee table.

The elegantly sparse contemporary design of the interiors is softened throughout the apartment by the carefully selected and layered fabrics. All the curtains were chosen from within one colour range but the fabrics vary with the result that each set of curtains hangs in a slightly different way.

*Shwag*

















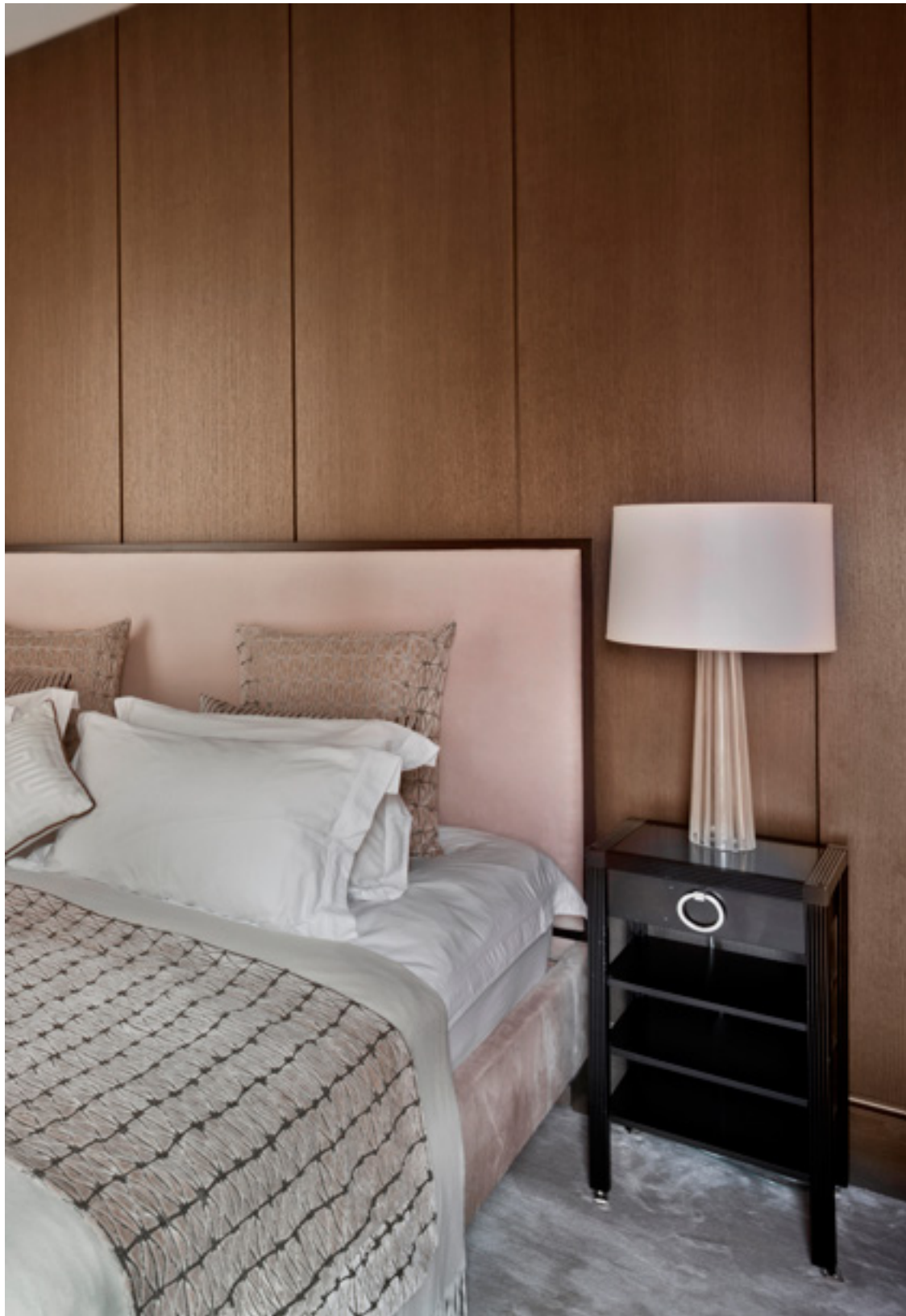
























## POKROVKA, Moscow, Russia

Size: 140 sq. m.

# A contemporary interior in a historic building

The building which houses this apartment was built in the early C20th, originally as a mansion apartment block operating for the profit of the neighbouring church. Oleg Klodt replanned the interiors, with the idea of creating a large central open-plan space. One of the most unusual design features was the mirrored wall, which divides the open-space area from the bathroom which adjoins it.

We'd never previously used brick as a finishing material - but in this project the original pre-1917-revolution brickwork was still in place, alongside the old heating network, and the chimneys. This 'loft'-style approach contrasts neatly with the high-end simply-figured furniture.







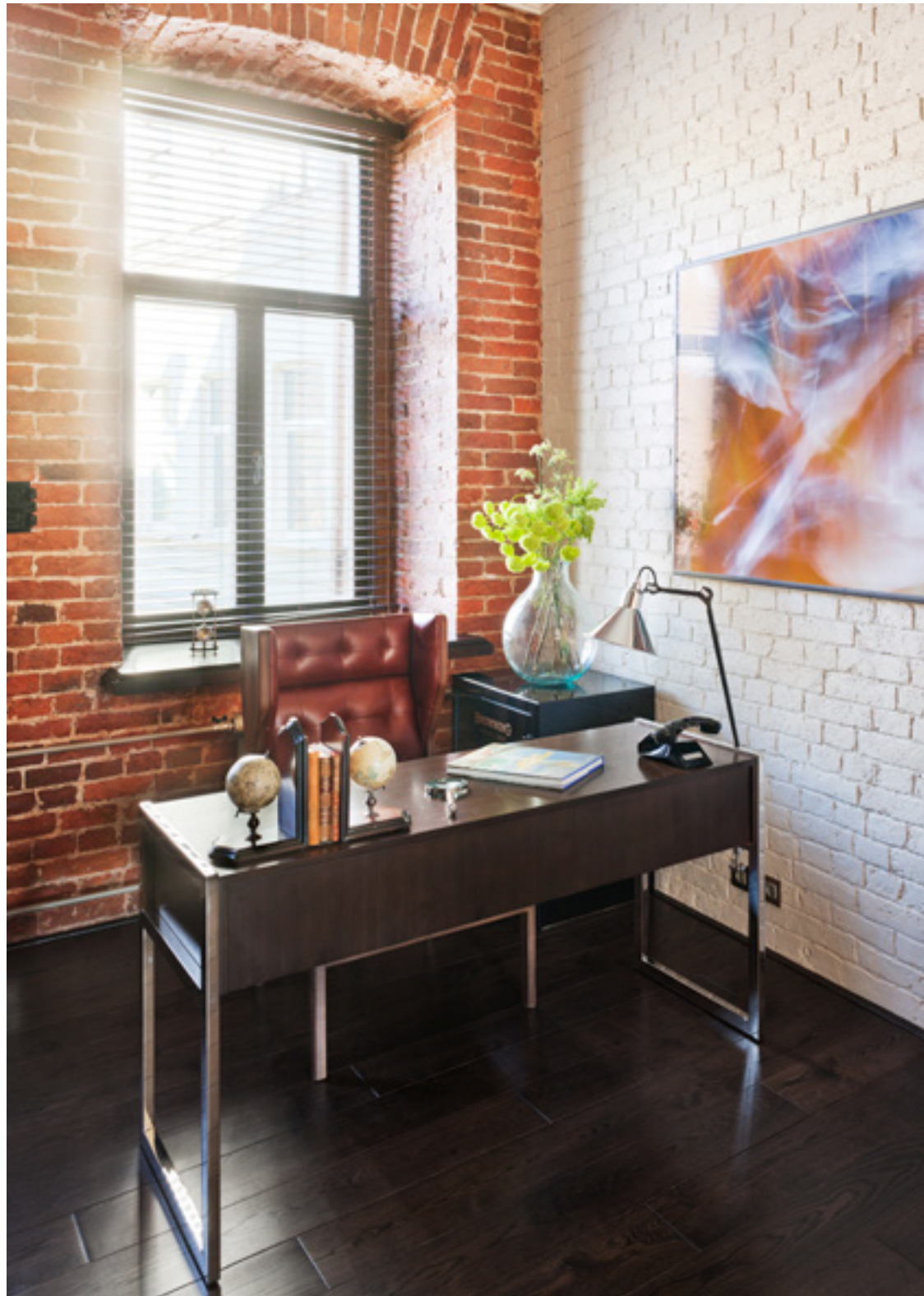




























## MOSFILMOVSKAYA, Moscow, Russia

Size: 190sq. m.

### A classic with a Belgian twist

The main design challenge we encountered when creating the open-space living zone was in laying out the kitchen. Our aim was to combine the lounge with the kitchen in such a way that the room didn't feel crammed with pieces of furniture. This meant designing the kitchen with a very neutral approach: a simple white range without handles and the working area hidden within the kitchen island.

The interior style is a fusion of elegant features and items. Against a monochrome substrate background we combined different shades of purple and blue, from calm through to strong tones, and utilised fabrics with differing shine and depth (alcantara, velour, velvet, and so on). Refined plaster moldings partner harmoniously with nineteenth-century paintings in rich gold frames.



































## STAROVOLYNSKAYA, Moscow, Russia

Size: 150 sq. m.

In a restrained style with some aspects of art-deco

We solved a number of issues while working this project: the space was quite small, the layout was uncondusive, and the clients came with their own Oriental cultural expectations.

We designed the interior around a series of contrasts – a densely dark wenge floor, white wall, beige and brown hues, diluted with turquoise tones. We resolved the layout issues by careful attention to the use of space. Built-in bulkhead wardrobe with transparent glass shelves which extends for the entire length of the corridor. In the bedroom, the unideal location of the bed in the master bedroom was solved by creating a complex back-structure for it. The kitchen was knocked-through to connect with an open-space lounge-dining area divided by partitioned area. We made extensive use of wood which we counterbalanced by the use of metal and fabrics. The fabrics are substantial in nature – velvet, silk, Alcantara – which is a further reflection of the client's own culture.

Visitors feel enveloped in the interior, as if in a cup of cappuccino with foamy froth, giving a sensation of comfort and tranquility.









































## SAVVINSKAYA, Moscow, Russia

Size: 300 sq. m., plus 150 sq. m. terrace

### A 'new classic' style interior

We created an entirely new floorplan for this project, by combining two apartments into one and replanning, in the greatest of detail, all of the space. We redesigned and built everything afresh: the panels, the portals, the built-in cupboards, the doors, the floor-design in the lounge, a mosaic created from four kinds of marble in the toilet... On top of that, as in all the projects our bureau undertakes, we introduced a lot of free-standing furniture throughout the apartment.

Another major feature of this project is the 150-metre terrace, which offers stunning views of the waterfront — or of the river and downtown Moscow.









































## THE HOUSE IN PAVLOVO VILLAGE, Moscow, Russia

Size: 600 sq. m., 200 sq. m., 70 sq. m.

### A classic American interior

The interiors of this domestic residence were designed with a large amount of American furniture and lighting, set against a simple oak board interior with light walls and unobtrusive moldings, as well as our in-house-designed furniture. There are plenty of large open areas, a simple staircase, and enormous windows – all adding to the charm and feeling of the home.

The three different buildings on this site were designed by the architects using somewhat separate stylistic approaches. The main house has been decorated with travertine stone and the guest house with larch board, while the summer pavilion is a light wooden construction. It's this combination of contrasting elements that creates something unique in this extraordinary architectural ensemble.













































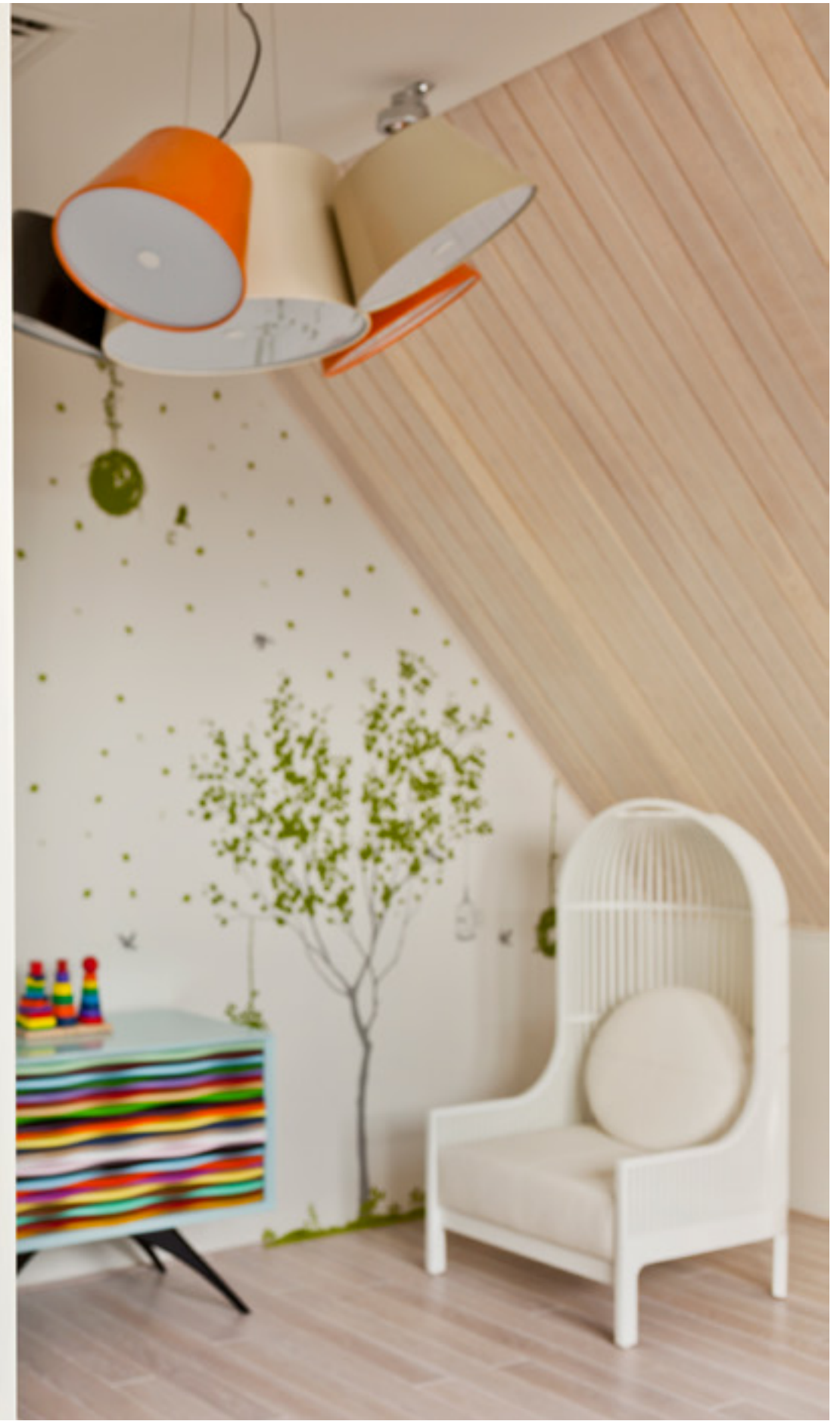




























## BOR'BY SQUARE, Moscow, Russia

Size: 120sq. m.

# Old-Moscow Style with a French accent

This apartment is located within an old building in Moscow city centre. The interior reflects the client's aspiration - the impression of an apartment passed down through the family from generation to generation over many years. This idea inspired us to design interiors suggesting the style of Moscow during the heady years of the 1920s and 1930s - but with a French accent.

The chimney-places of the old building survived, and were worked into the design to introduce a stove in the Old-Moscow style in the bedroom, and a fireplace in the dining room. All of the fittings were purchased in antique shops in Paris and Amsterdam and the parquet flooring was laid out in the 'French herring-bone' pattern. Probably the most eloquent compliment about this project comes from the client: "No matter how widely I travel, something is always drawing me homewards, to my own apartment. There's nowhere I feel more at ease and comfortable than in my own apartment".









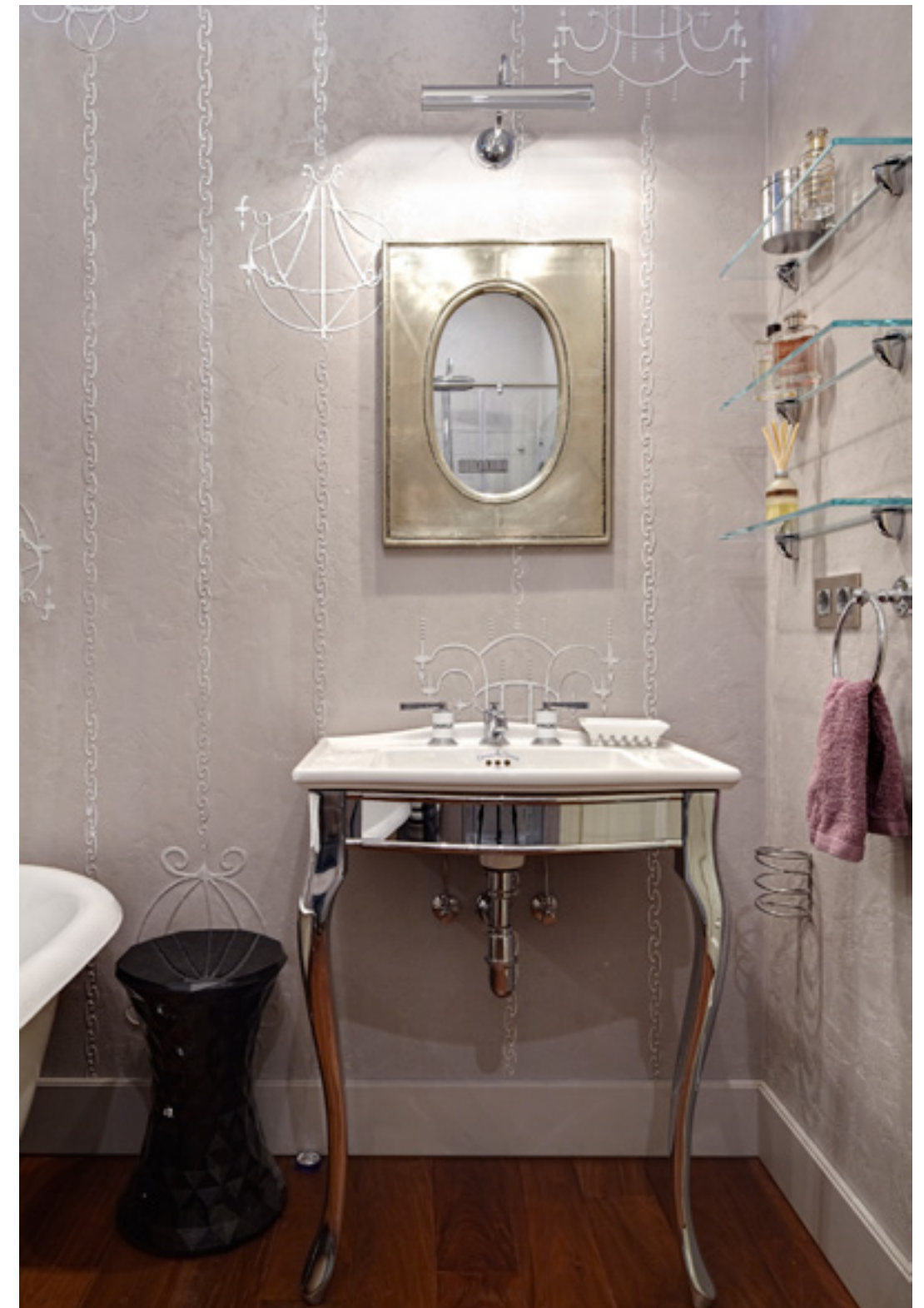
















## HOUSE IN THE NETHERLANDS, Amsterdam, The Netherlands

Size: 320sq. m.

### European constructivism of the 1960s period

This is a building with a special history, designed in the last century and used as an artist's studio. The cornerstone of our concept was to preserve the appearance and architectural vernacular of the building, while making it a welcoming and comfortable place to live for its new owners: a family with two children. We were able to increase the living-space area, as well as convert the orangerie into a kitchen-dining space.

We laid out the interiors in a Dutch minimalist style. The artist who had lived here - Gerard Schaperkötter - had created a very unusual atmosphere in the house, and his paintings became the inspiration for the interiors. The final result was a very understated, simple and restrained interior that nonetheless remains a comfortable living space: while the building itself has retained its essential character, while gaining a slightly more contemporary edge.

























## THE HOUSE AT DMITROVKA, Moscow, Russia

Size: 180sq. m.

### A simple yet stylish modern home

The building's simple geometrical shape (with a basic rectangular floorplan) was the inspiration for the huge overhanging flat roof, which extends over the deep balconies on the upper floor. The upper level itself projects outwards slightly above the ground floor, on diagonal beam structures. The traditional wooden facing of the exterior walls is partnered with a large angled stone wall that supports the building on one side.

Visitors to the house immediately find themselves inside a tall and airy space, and don't even notice that the actual size of the building is, in fact, relatively small. Simple and natural materials are used for the interior finishings – solid stained larchwood board for the floorings, plywood ceilings, painted walls, and curtains from simple fabrics. A collection of handicrafts and items which the owners have collected from their travels all over the world create a distinctive ambience. It's a special and comfortable interior with its own calm aura.

























## NAGORNIY BOULEVARD, Moscow, Russia

Size: 132 sq. m.

# An elegant interior in New York loft style

The client is a successful young lady. She asked us to create a contemporary, stylish interior, where she could live comfortably with her family. The main issue was the restricted size of the apartment, in which she needed to arrange all the zones of strategic importance for her life - the kitchen, lounge, bedrooms for parents and children, a bathroom and several wc's, a laundry room, and her study.

The main approach we took in the design concept was a balance of contrasts. The wooden blinds contrast with the light coming in from the windows, which are set in dark frames. The palette of colours is based on a combination of black, grey, and light-grey tones, set off with focuses of brighter shades - yellow and turquoise (the chairs), and orange (the scatter cushions on the sofa). There are levelled concrete floors throughout the apartment, and there is almost no textile used in the decoration. Comfort and softness is instead provided for with soft carpets, which make a harmonious combination with the tactile surfaces.

The lounge is dominated by bright colours. The minimalist furniture recalls the swinging Sixties, and the decor objects create a special atmosphere. There is a view to the kitchen from the lounge - the transparent chairs have bright-blue upholstery, while the dining-table is made from circular sections of plywood with a black top, with a textured metal apron. The master bedroom is decorated with panels of distressed glass, which highlight the tall tailor-made headboard, and the wall decorations. The children's bedroom was specially designed for a young girl who is in love with everything British. The design of the room is based on British motifs and laid out in thematic British colours.

We designed a project in which the different spaces in the apartment blend into each other, and so the overall feeling is one of holistic integrity. The overall result is a restrained and elegant interior, which combines the best of Belgian motifs with the style of a New York loft.

















































OLEG KLODT  
ARCHITECTURE  
& DESIGN

COMMERCIAL INTERIORS





## THE QUEEN V, Moscow, Russia

Size: 600 sq. m.

# English Pub & Restaurant

The client strongly wanted to emphasize the concept of his business – as an English pub, with a restaurant that serves a large selection of dishes. For this reason, the interiors of these premises were designed in a plain and unassuming style that retains the business identity and presentability of the business.

Designing the interiors of a restaurant requires a more individual approach than for a domestic interior – a restaurant shouldn't feature mass-produced branded furniture items. The interiors of this restaurant feature many items made especially for the premises, including a light fitting made from straws near the entrance, and a staircase made from industrial metal. All of the furniture – including the built-in furniture, units, and soft furnishings – was specially made to designs created by Oleg Klodt.

The centrepiece of the design is the bar zone. The tin 13-metre worktop was made by hand in France using a special method which allows the establishment's branding identity to be featured in the metal design. The restaurant's brand identity was also developed by our bureau in parallel with the interior design concept.

The project went from drawing-board to opening day in eight months.

































## RETAIL SPACE FOR LOFT DESIGN BY..., Moscow, Russia

Size: 60 sq. m.

### The French brand's first clothing store in Moscow

We deployed concrete panels as the finishing materials for both the walls and floors. They're combined with metal cladding on the columns and the hanging spaces for clothes. The hanging spaces were specially designed by Oleg Klodt to be created out of water plumbing pipes. The light walnut from which the shelves and clothing cabinets are made adds a feeling of equilibrium – and were similarly built to unique designs by the project architect.

The rest of the furniture and the old-fashioned cash-registers were picked up at different flea-markets in London. The shelves and vintage suitcases are lined with antiquarian books about art.

We succeeded in creating stylish interiors which reflect and reinforce the principles of the client's brand, and underscore that intelligent design of their clothing. The project went from drawing-board to opening day in just four months.





























## THE STRAUSS BEAUTY SALON, Moscow, Russia

Size: 300 sq. m.

# A two-storey beauty salon in the Viennese House in Moscow

The beauty salon occupies 330 square metres of floorspace, and was completed in eight months.

The interiors of the salon are designed in a contemporary Viennese art nouveau style. The presentation area is made up of a large hall with a reception desk and waiting area, separated from the hairdressing, manicure and beauty procedures area by a decorative metallic grille. There is a Corian panel behind the Reception Desk – a replica of a famous work by the artist Alphonse Mucha.

The treatment and medical rooms are located in the working area of the salon, along with the administrative office and other workspaces. These are fitted out with the minimum of décor, with the emphasis on functionality. Our design bureau built the hair-dressing equipment seamlessly into the design of the salon.

A stylized, handwritten signature in black ink, likely belonging to Oleg Klotz, the architect.





















## THE VOENTORG OFFICE, Moscow, Russia

Size: 1300 sq. m.

# A functional and comfortable office space

This is the Head Office of a major corporation. Its 1300 square metres of floorspace were completed within half a year. The principle task was to avoid any hint of discomfort, while maintaining a business-like working atmosphere.

Each of the offices in the presentation zone of the office building is divided into zones – discussion, open-plan, work-spaces, relaxation space, and toilet facilities. The design reinforced the elegant taste of the owners, and ticks all the boxes for an interior for the luxury segment.

The conference room and reception area produce the most striking effects. Oleg Klodt designed the Reception Desk, as well as the five-metre-long Great Table in the conference room. The table has built-in facilities for microphones, power sockets, storage drawers, and everything a working environment might need.

The work zone of the building is designed in a more calm and standard way.

The balance that arises between the working atmosphere and domestic comfort was carefully managed, to produce a very functional and truly stylish office.





















## THE AVEDA BEAUTY SALON, Moscow, Russia

Size: 5 salons varied in floorspace from 30 to 200 sq. m.

# Beauty salons for the Aveda natural cosmetics brand

In total we designed five salons, which varied in floorspace from 30 square metres to 200 square metres. Each salon project was conceived and completed within three months.

It was a major priority to create an overall style which would distinguish these salons from neighbouring commercial space within retail centres. When creating this concept, we stuck solidly to the concept of the company's brand, whose corporate philosophy is that "Nature is the inexhaustible source of beauty». We had pharmacy-styled furniture built especially for these salons, including cabinets for bags and accessories, tables, and so on.

We put the main emphasis on functionality – we succeeded in creating the necessary separate areas in even the smallest of the salons we designed, including hair-dressing, a retail area, spa, and manicure.

The balance that arises between the working atmosphere and domestic comfort was carefully managed, to produce a very functional and truly stylish office.

A stylized, handwritten signature in black ink, likely belonging to Oleg Klotz, the architect.























## OLEG KLODT ARCHITECTURE & DESIGN

---

If you would like more information, to discuss a project, or discuss collaboration with us — please get in touch with us!



### Address

Nastavnicheskiy lane 17/1,  
Moscow, Russia

### General

+7 (495) 221 11 58  
[info@olegklodt.com](mailto:info@olegklodt.com)

### Careers

[hr@olegklodt.com](mailto:hr@olegklodt.com)

### PR & International Communications

+7 925 062 93 25  
[pr@olegklodt.com](mailto:pr@olegklodt.com)  
Nikolay Flerov

### Supplier inquiries

+7 (495) 221 11 58  
[izumrud@olegklodt.com](mailto:izumrud@olegklodt.com)  
Izumrud Paramazova



